

LED HIGHBAY LIGHT

Beacon120 Highbay

Features

- Quick out-of-the-box plug & play installation. No rewiring required to accommodate different voltages.
- No additional extension cords required.
- State-of-the-art DirectDrive technology eliminates need for external driver.
- Connects to daisy-chain with modular Quick Connect.
- Compact & lightweight. Easy to uninstall, transport & store.



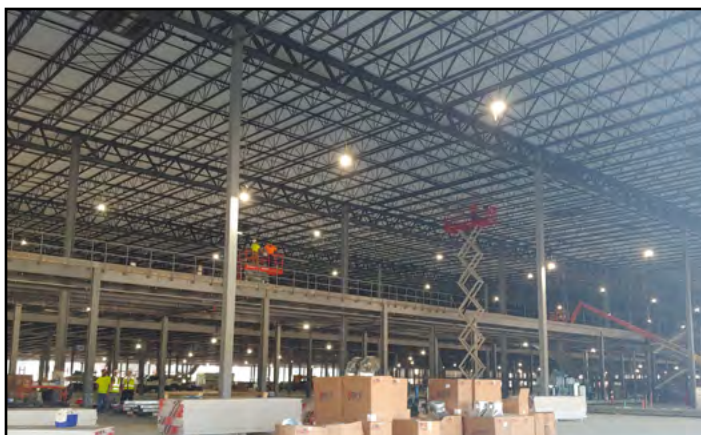
The Beacon120 Highbay drastically reduces the labor, material and maintenance requirements associated with temporary highbay lighting. Installation is quick and easy with no rewiring required to accommodate different voltages.

Applications

- Area lighting for high ceiling heights
- Replace 400W metal-halide lights

Recommended guidelines to meet OSHA standards

- Installation height: 15-25 feet
- Spacing: 50 feet



Specifications

Part Number	LE-HB120LED-25P25C
Description	Beacon120 Highbay
Lumens	15,250
Watts	120
Light Temperature	4,500K
Amp Draw (@120V)	1
Voltage	90-277
Linkage Rating (15A/120V)	12
Weight (light head)	2.6 lbs
Daisy-Chain	14/3 SJTW with molded 5-15P plug & 5-15C triple-tap connector
Daisy-Chain Length	50'
Quick-Connect	Watertight 3-pin locking connector
LED Expectancy	50,000 hours
Construction	High strength lightweight aluminum housing with polycarbonate lens.
Approvals	cETLus and CE Certified
Weatherproof Rating	IP65
Mounting options	Rugged stainless steel carabiner