

LED TASK/PORTABLE LIGHTING

Beacon360 Trek & Beacon970

Features

- Designed with high-efficiency solid-state integrated LED technology.
- Extra thick yoke for rough handling and transport.
- Strong strain relief for extra protection against cord fatigue.
- SJOW cable for increased durability.
- Beacon970 features a convenient carrying handle.



Beacon360 Trek

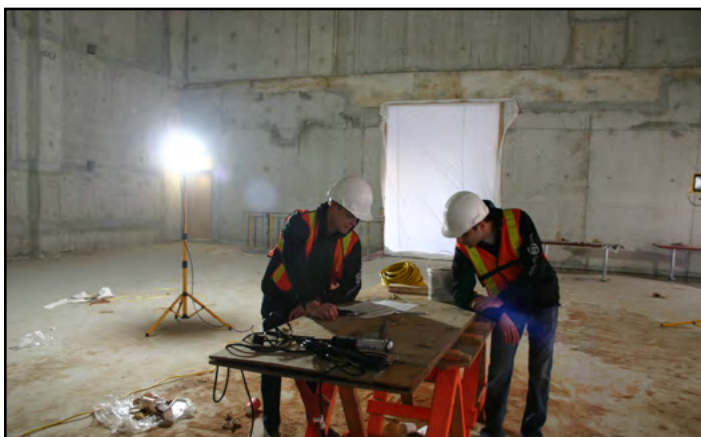


Beacon970

The Beacon970 Floodlight & Beacon360 Trek will endure shocks, drops, vibrations and rough handling while providing widespread shadow-free crisp light coverage. These tough lights can be easily moved around the site and be attached to different accessories such as tripods, floor stands, magnets and clamps.

Applications

- General portable task lighting
- Replace 500W quartz-halogen floods
- Replace wobble lights
- Finishing stages
- Renovations



Specifications

Part Number	LE360LEDL	LE970LED	LE970LED-TD
Description	Beacon360 Trek	Beacon970	Beacon970 Dual-Head Tripod
Lumens	7,800	6,000	12,000
Watts	60	40	80
Light Temperature	4,700K	4,500K	
Amp Draw (@120V)	0.5	0.33	0.67
Voltage	90-277		
Weight (light head)	3.5 lbs	8 lbs	8 lbs
Cord	15' 18/3 SJTW cord with 5-15P plug	15' 16/3 SJOW cord with 5-15P plug	
LED Expectancy	50,000 hours		
Construction	Cast aluminum housing with shatterproof polycarbonate lens		
Approvals	cETLus	cULus	
Weatherproof Rating	IP64	IP65	
Mounting options	4-8' Tripod (-TR) Floorstand (-FS) Magnet (-MAG) Clamp (-CLAMP)		Heavy-duty 4-8' tripod included